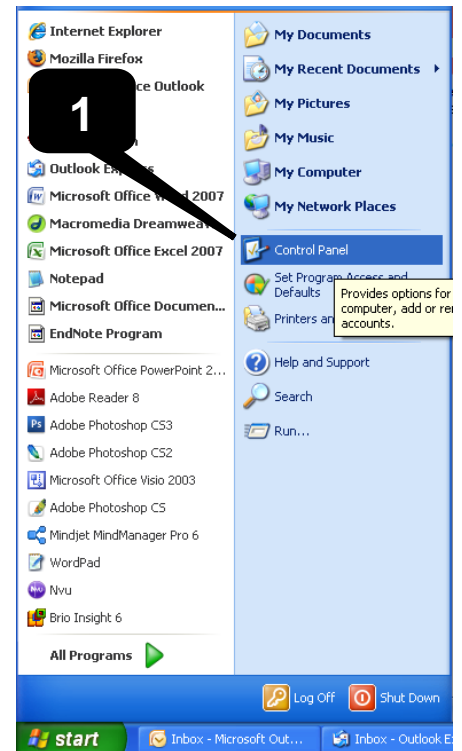
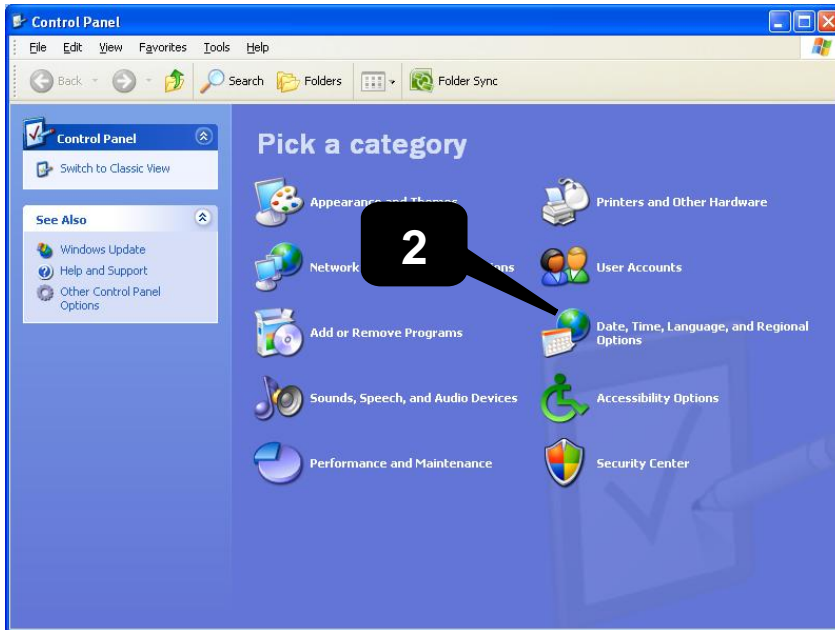


# Typing Macronised Vowels on a PC

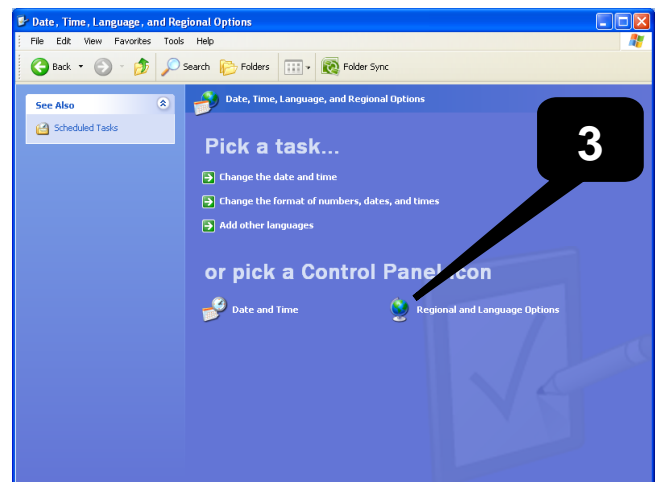


There are many methods that a PC can use to type the macron symbol over a vowel. The easiest and most thorough method is to change the keyboard driver that is used by the operating system, as follows:

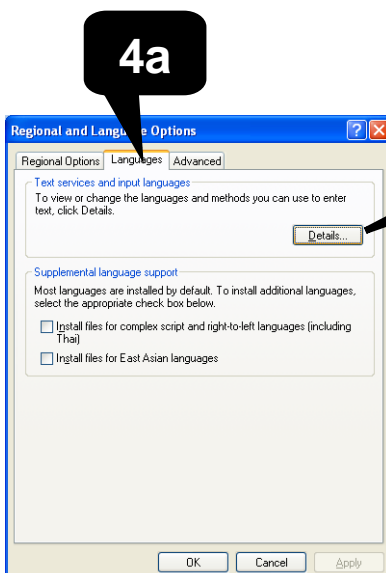
## 1. Open the **Control Panel** [1] from the **Start** menu



## 2. Then select **Date, Time, Language, and Regional Settings** [2] if you are using the control panel shown above, or go straight to **Regional and Language Options** (step 3 below) if you are using the classic control panel view.

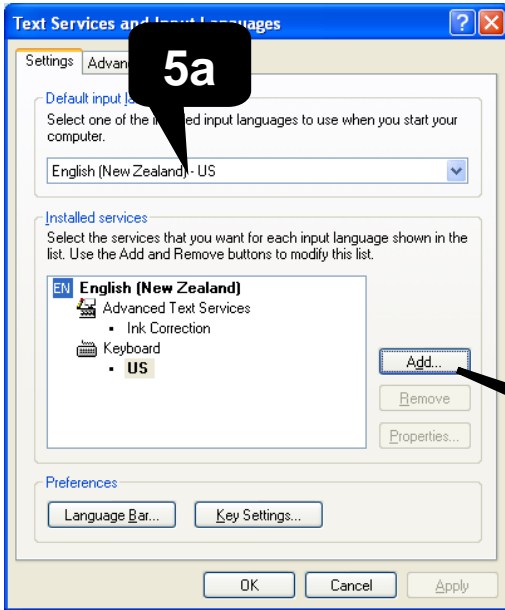


## 3. Next select **Regional and Language Options** [3]

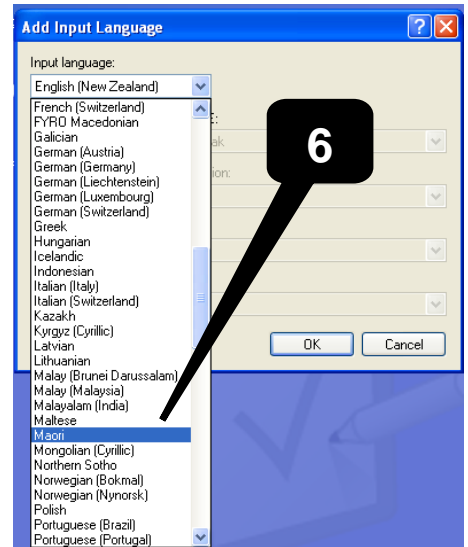


## 4. Select the **Languages** tab [4a] and then click the **Details** button [4b]

# Typing Macronised Vowels on a PC



**5.** Select **English [New Zealand] [5a]** as the **Default input language** then click the **Add... button [5b]**.



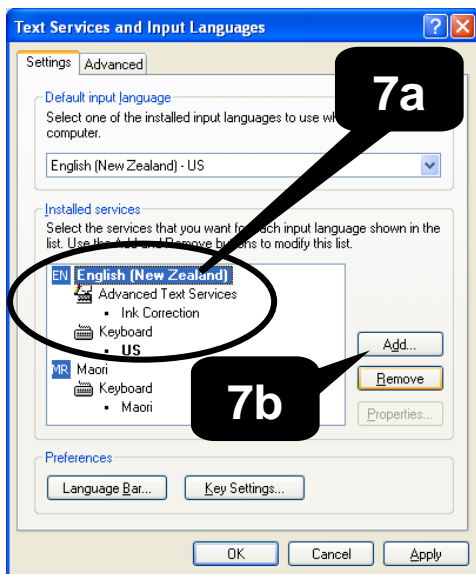
**6.** Select **Maori** from the drop down list [6] as the input language.

This will change the keyboard settings to the Māori keyboard which the University of Waikato was instrumental in adding to the Microsoft settings options.

Then click **OK**

**7.** Now select the old **English [New Zealand] service** (or whatever contains the **Keyboard US service**) [7a] and click the **Remove button [7b]**.

Then click **OK**. You will then see a warning message which you can ignore. Click **OK** to accept it, then **OK** again to exit the **Language and Regional Options panel**.



**8.** In most cases you can immediately use the Māori keyboard to type macronised vowels. For some older documents you may need to Restart the computer to use the new process



You do this by typing the acute/tilde key [8] followed by the macronised vowel you want to add.

