

Visual Basic .Net

Some differences between VB 6 and VB .Net

Creating a solution

In your account create a folder called **VB**. Start Visual Studio and then select **File>New>Blank Solution**. You should see the following:

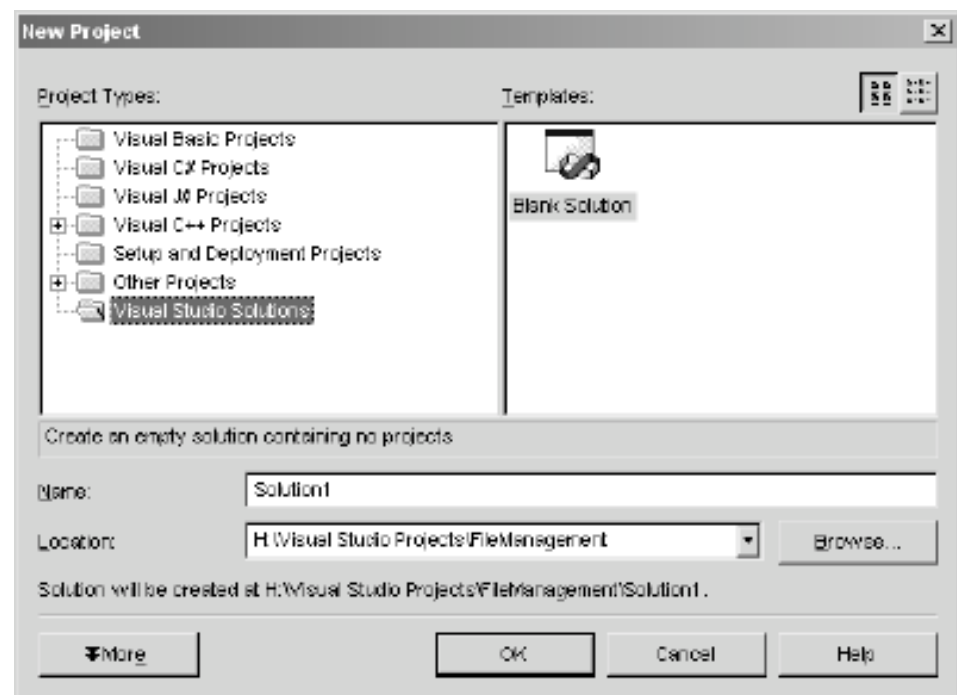


Figure 1. New Solution Dialog Window.

For the 'Location' click on the **Browse** button and then navigate to your account and select your **VB** folder and then click on the **Open** button. You should now see the location of the VB folder appear. Now change the name of the solution to **Testing** and then click on the **OK** button. This will now create a blank solution for you to create applications in.

It will create a new folder with the name of your solution as the name of the folder in your VB folder. Have a look and check that this is so. It will also create a solution file called 'Testing.sln', if you double click this file then it will open your entire solution in VB.

Differences Between VB 6 and VB .Net

A solution can consist of many projects but for this course you will only have one project in your solution. In the Solution Explorer pane, right click on your solution and then select **Add>New Project**. You should now see the following window:

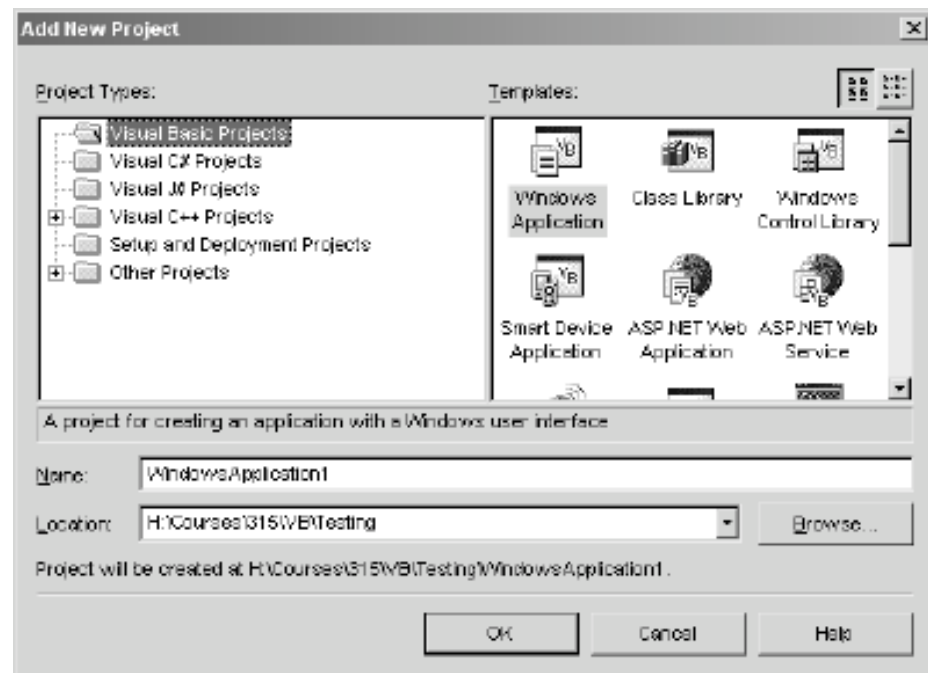


Figure 2. New Project Dialog Window.

Leave the 'Location' as it is and change the name of the project to **MyProject** and then click on the **OK** button. You should now see the Project appear in the Solution Explorer pane and a new blank form appear in the design window.

This is how you create a solution and for each application you create you should have a different solution.

Controls

All of the controls that were in VB 6 are pretty much the same with some minor differences. You can see them in the tool box pane on the left hand side of the screen.

Label Control

The Label control does not have a Caption property any more. When you want to put some text in a label use the Text property instead. I.E.

```
lblMessage.Text = "VB .Net is not so bad"
```

Note: You must include the '.Text' in VB .Net or you will get an error.

Check Box and Radio Button Controls

Use the Checked property to tell if a check box or radio button is checked or not. I.E.

```
If chkVisa.Checked = True then
```

List Box Control

To add to a list box use the following command:

```
lstNames.Items.Add("Nilesh Kanji")
```

To clear the contents of a list box use the following command:

```
lstNames.Items.Clear()
```

VB .Net Statements

Most of the code structures in VB .Net is pretty much the same as VB 6. Here are some differences.

Event Procedures

The structure of an event procedure has changed but you can pretty much ignore the stuff VB adds automatically. Just double click on the control to create the event procedure and then type in your code just as you did in VB 6.

Message Box Window

To show a message box window use the following statement:

```
MessageBox.Show("This is a Test")
```

Most of the major programming structures like IF statements, loops, etc are the same. Many of the old VB 6 functions are also present, like Val, InputBox, etc. So if you get stuck try using the old VB 6 functions.

Make use of the online help and searching the web. There is a wealth of information out there if you use it.
